

172C

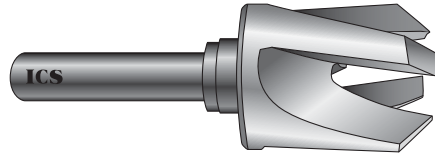
CARBON STEEL
WOOD PLUG CUTTERS - CLAW TYPE

ICS

WIS

SPECIAL PURPOSE

FOUR CUTTING BLADES



Claw Type Wood Plug Cutters are designed for cutting your own wood plugs. They cut clean and fast to make smooth chamfered plugs for easy starting in the counterbored holes. They do not eject the plug which remains in the board and can be broken out with a blade screwdriver or the board can be sawed to free the plug. Wood plugs are used to conceal screw heads in counterbored holes.

ITEM NO.	PLUG SIZE	MAX LENGTH	SHANK DIA.	PRICE
WPCCT016	1/4	1/2	3/8	\$6.32
WPCCT024	3/8	1/2	3/8	7.56
WPCCT028	7/16	1/2	3/8	8.34
WPCCT032	1/2	1/2	3/8	8.60
WPCCT040	5/8	5/8	3/8	10.56