

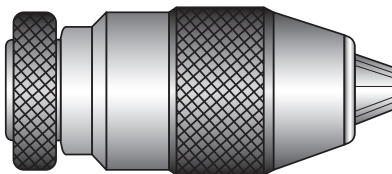
# KEYLESS DRILL CHUCKS

ICS WIS

HEAVY DUTY

PRECISION CRAFTED

1/4" HEX SHANK



Keyless Drill Chucks are high precision, super ball bearing chucks designed for high accuracy use on CNC machining centers in drilling, boring, milling, and counterboring operations. They have a self-tightening feature and can be tightened and released by hand, no key required.

CHUCK MODEL	CAPACITY		TAPERED MOUNT	LENGTH (in.)		DIAMETER (in.)	WEIGHT (lbs.)	ITEM NO.	PRICE
	INCHES	MM		OPEN	CLOSED				
6/J1	0-1/4	0-6	1JT	2.40	2.67	1.34	.85	DC-06/J1	79.98
10/J2	1/64-3/8	.5-10	2JT	3.15	3.27	1.57	1.10	DC-10/J2	83.10
10/J33	1/64-3/8	.5-10	33JT	3.15	3.27	1.57	1.10	DC-10/J33	83.10
13/J2	1/32-1/2	1-13	2JT	3.54	3.70	1.81	1.63	DC-13/J2	98.78
13/J33	1/32-1/2	1-13	33JT	3.54	3.70	1.81	1.63	DC-13/J33	98.78
13/J6	1/32-1/2	1-13	6JT	3.54	3.70	1.81	1.63	DC-13/J6	98.78
16/J3	1/8-5/8	3-16	3JT	4.06	4.25	2.20	3.09	DC-16/J3	120.74
16/J6	1/8-5/8	3-16	6JT	4.33	4.53	2.20	3.31	DC-16/J6	120.74

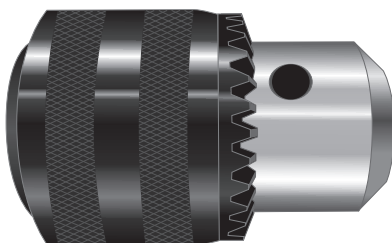
# KEY TYPE DRILL CHUCKS

ICS WIS

MEDIUM DUTY

PRECISION CRAFTED

PLAIN BEARING CHUCK



Key Type (Medium Duty) Drill Chucks are industrial quality chucks designed for high accuracy use on power tools, bench drilling machines, and wood working machinery. All parts are hardened for maximum tool life. Chucks are provided with key.

SIZE	CAPACITY		MOUNT	USES KEY	WEIGHT (lbs.)	ITEM NO.	PRICE
	INCHES	MM					
3/8	0-3/8	0-10	3/8-24	K30	.48	DC-KM10-024	17.24
3/8	0-3/8	0-10	1/2-20	K30	.48	DC-KM10-032	17.24
3/8	0-3/8	0-10	6JT	K3	.48	DC-KM10-06JT	23.52
1/2	1/64-1/2	.5-13	1/2-20	K32	.80	DC-KM13-032	23.52
1/2	1/64-1/2	.5-13	6JT	K3	.80	DC-KM13-06JT	23.52
5/8	1/64-5/8	.5-16	5/8-16	K32	1.30	DC-KM16-040	32.20
3/4	3/16-3/4	4.8-19	3JT	K4	1.50	DC-KM19-048	35.70