

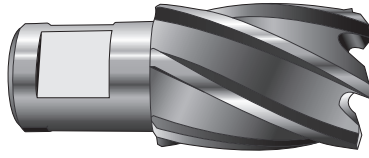
HIGH SPEED STEEL ANNULAR CUTTERS

ICS WIS

SPECIAL PURPOSE

GROUND END TEETH

TWO FLATS
ON SHANK



RIGHT HAND
CUT

Annular Cutters are designed to be used with magnetic base drills, drill presses, milling machines, etc. to drill large diameter holes quickly and efficiently. They have up to 12 cutting edges to cut around the hole, leaving only a center slug which pops out. Quality burr-free holes can be cut in a single pass, 3-5 times faster than conventional twist drills. They can also cut multiple (overlap) hole configurations as well as curved surfaces and interrupted cuts.

DEPTH OF CUT	SHANK	STEEL SPECS	CUTTING APPLICATION
1", 2", 3", 4"	3/4	M2	For general purpose cutting of steel plate, structural steel, steel pipe, etc.

Fractional Sizes (3/4" Weldon Shank) 7/16" to 4" Dia.

SIZE	DEC. EQUIV.	DEPTH OF CUT			
		1"	2"	3"	4"
		AC1D	AC2D	AC3D	AC4D
7/16	.4375	30.48	62.12	-	-
1/2	.5000	31.70	37.20	-	-
9/16	.5625	32.10	40.06	-	-
5/8	.6250	33.26	43.60	-	-
11/16	.6875	37.14	46.10	-	-
3/4	.7500	40.88	49.08	-	-
13/16	.8125	42.32	52.88	-	-
7/8	.8750	44.76	57.28	-	-
15/16	.9375	47.00	60.24	-	-
1	1.0000	49.78	63.80	-	-
1-1/16	1.0625	54.46	70.94	-	-
1-1/8	1.1250	56.98	75.80	CALL	CALL
1-3/16	1.1875	57.38	78.66	FOR	FOR
1-1/4	1.2500	59.90	81.64	PRICE	PRICE
1-5/16	1.3125	63.74	86.02	-	-
1-3/8	1.3750	82.38	90.54	-	-
1-7/16	1.4375	91.32	108.34	-	-
1-1/2	1.5000	97.40	108.34	-	-
1-9/16	1.5625	108.46	121.76	-	-
1-5/8	1.6250	116.02	127.72	-	-
1-11/16	1.6875	132.56	146.12	-	-
1-3/4	1.7500	132.56	141.96	-	-
1-13/16	1.8125	155.40	163.34	-	-
1-7/8	1.8750	155.02	175.00	-	-
1-15/16	1.9375	163.66	183.76	-	-
2	2.0000	175.66	171.66	-	-
2-1/16	2.0625	205.80	229.26	-	-
2-1/8	2.1250	236.04	257.44	-	-
2-3/16	2.1875	237.82	263.24	-	-

SIZE	DEC. EQUIV.	DEPTH OF CUT			
		1"	2"	3"	4"
		AC1D	AC2D	AC3D	AC4D
2-1/4	2.2500	245.02	270.94	-	-
2-5/16	2.3125	253.26	277.60	-	-
2-3/8	2.3750	258.80	285.38	-	-
2-7/16	2.4375	264.32	293.08	-	-
2-1/2	2.5000	270.94	301.92	-	-
2-9/16	2.5625	276.52	309.70	-	-
2-5/8	2.6250	284.22	315.20	-	-
2-11/16	2.6875	289.78	322.96	-	-
2-3/4	2.7500	CALL	330.68	-	-
2-13/16	2.8125	303.06	337.30	-	-
2-7/8	2.8750	309.70	343.94	-	-
2-15/16	2.9375	316.32	351.72	CALL	CALL
3	3.0000	-	-	FOR	FOR
3-1/16	3.0625	-	-	PRICE	PRICE
3-1/8	3.1250	-	-	-	-
3-3/16	3.1875	-	-	-	-
3-1/4	3.2500	-	-	-	-
3-5/16	3.3125	-	-	-	-
3-3/8	3.3750	CALL	CALL	-	-
3-7/16	3.4375	FOR	FOR	-	-
3-1/2	3.5000	PRICE	PRICE	-	-
3-9/16	3.5625	-	-	-	-
3-5/8	3.6250	-	-	-	-
3-11/16	3.6875	-	-	-	-
3-3/4	3.7500	-	-	-	-
3-13/16	3.8125	-	-	-	-
3-7/8	3.8750	-	-	-	-
3-15/16	3.9375	-	-	-	-
4	4.0000	-	-	-	-

Also available as TiN Coated and TiCN Coated. Inquire for pricing. Pilot pins available on page 127.